

Ephraim Moravian Messenger

News from the Open Door

“In Essentials, Unity; In Non-Essentials, Liberty; In All Things, Love”

Congregational Watchword for 2015

“Let us consider how to provoke one another to love and good deeds, not neglecting to meet together, as is the habit of some.” - Hebrews 10:: 24, 25

February 2015

Pastor's Page:

Our new watchword is taken from a book of the bible which is difficult to understand. The book of Hebrews contains great theological concepts concerning faith, the system of sacrifices and the priesthood of Christ. It was written by a scholar for a group of scholars. And yet, within these lofty prose, we are challenged with a strong and practical imperative: 'Provoke one another to love and good deeds'. 'Provoke' is a powerful word. It doesn't mean 'to suggest', or 'plead' or 'cajole'. It basically means, 'get out the cattle-prod!' We are called to heal the brokenhearted, set the captive free, visit the sick and feed the hungry. We are called to do things for which we may feel ill-equipped to handle. I recall my pastor, when I was in my 20's, getting out the cattle prod and challenging me to do something that I felt I was completely unsuited for. I was a faithful church attender. I taught Sunday School and sang in the choir. But this pastor asked me to go beyond the church walls, into the community. I tried to weasel out of it, but he insisted and I caved in! I am so grateful for the cattle-prod. I learned that people outside the church need the love and compassion of Jesus. Let us, this year, prod each other to love and good deeds.

The second imperative is as important as the first: 'Do not neglect to meet together.' We were never meant to worship God alone. God called us into community. We are at our best when we are together. We need each other- even when we're with people we don't like. If we take this command seriously, God will help us to learn and grow together. Some of my most valuable lessons have come from people in the church that I would never have befriended outside the church walls. This is the family God has given to us and we're in this life together. It's an absolute necessity, for our spiritual health and well-being, to be in fellowship with others, in worship, in bible study, in prayer, over a meal. When I am in worship, even after a difficult week, the prayers of the saints and the songs of the faithful lift me to new heights of joy. Brothers and sisters, let us continue to be present with each other! May this year produce many deeds of love and service. I'll see you on Sunday! - Pastor Dawn

Ephraim Moravian Church Office Hours

PASTOR: TUES - FRI 9 a.m. - 12 p.m.
 MONDAY Pastor's Day Off
 SECRETARY: WED. - THURS. 9:30 a.m.—4:30 p.m.
 CELL NUMBER: 920-421-4042 The Church Phone does NOT ring in the parsonage. Please keep the Pastor's Cell Phone handy for after hours.



Shrove Tuesday Pancake Supper February 17 5 - 7 p.m.

Join us for a great pancake supper!

There will be a free-will offering to assist Sadie Nelson. Sadie has been accepted into a program to study abroad for her junior year.

Sadie has just found out that she will be in **INDIA** for the 2015-16 school year, which was her first choice. She worked extra hours last summer to raise the funds necessary. She's about 1/2 way to her goal of \$6,500. We hope to raise enough for her to realize her dream. All checks for her scholarship should be made out to the church, with Sadie's name in the memo portion of the check.



YOUR BOARD MEMBERS

TRUSTEES

Funds: Investment Committee

Building Interior and Trustee

President:

Hugh Mulliken 854-2336

Building Exterior:

Paul Burton 854-9506

Grounds:

Kay Wilson 854-4612

Cemetery:

Linda Carey 854-9253

Marilyn Cushing 854-5230

ELDERS

Pastor Dawn Volpe, Chair

Paul Flottman, Vice Chair 854-4780

Shelley Cox 854-2548

Cici Mulliken 854-2018

Doug Schultz 854-2153

Elder for the month of:
February....Doug Schultz

Sacristan for February
Bob Volpe

Kaye and Harry Maher ...

...wish to thank all the congregation members who supported them during the time of their son's tragic death and at the memorial service. "Please express that we are simply overwhelmed by the love, the caring, the work that so many did. A person doesn't know it until you experience it how an outpouring of love like this not only helps physically to get things done, but is truly a soothing balm. "

Kaye and Harry

Services in February

Feb 1 - 9 a.m. Sunday School, 10 a.m. Worship/Communion

Feb 8 - 9 a.m. Sunday School, 10 a.m. Worship/Joyful Noise

Feb 15 - 9 a.m. Sunday School, 10 a.m. Worship

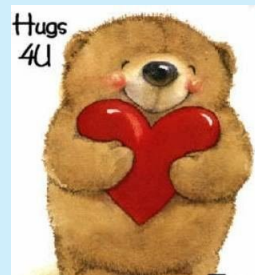
Feb 22 - 9 a.m. Sunday School, 10 a.m. Worship

.....to those who offered Fellowship after church in January:
The Volpes, Sue Sherman, the Mullikens, and the Zieglers

...for our Open Door Lunch crew in January: Gunilla Wilson,
Mary Wilson and Jody Thiell

...for those who brought food to the Church Council potluck
and helped clean up.

.....to those who ushered in January and served as sacristan.



**MORAVIAN YOUNG ADULT CONVO 2015
THIS SUMMER!
JULY 5 – 13, 2015!
CZECH REPUBLIC AND GERMANY!**

Every four years Moravian young adults ages 18 – 26 in North America have the opportunity to come together for a Moravian Young Adult Convocation. The next Young Adult Convo is this summer. Together we will travel to the Czech Republic and Germany to see many of the historic Moravian sites and to find inspiration and vision for current ministry. In the Czech Republic the trip includes visiting Prague (where John Hus preached), Kunwald (where the Unitas Fratrum, the early Moravian Church, first settled), and the Chalice Rocks (where members of the Unitas Fratrum met during their time of persecution). In Germany the trip includes visiting Herrnhut (where the Unitas Fratrum experienced a great spiritual renewal). Please join us as we “Make the Moravian Journey Home and Catch a Vision for Our Future!”

For more information about Convo 2015, please check its website at <http://convo2015.wordpress.com/> or its Facebook page at “Moravian Young Adult Convo 2015”. You can register online at <http://www.planetreg.com/MoravianYoungAdultConvo2015>. There is a limited number of spaces for this trip, and registrations need to be in by January 15, 2015. If you have questions, please contact Cynthia Rader Geyer, Director of Youth and Young Adult Ministries at cynthia@mcnp.org or call/text [\(484\) 554-0102](tel:4845540102).

**Holy Conversations regarding
Human Sexuality**

**We are postponing these
Conversations. We invite you to
speak with Pastor Dawn if you
have any concerns or questions.
If there is a strong desire to
have a group meeting to discuss
any of these issues, we will cer-
tainly be happy to facilitate a
meeting.**

**Congratulations to Kathy & Chuck Zehner,
whose granddaughter, Ingrid Josephine,
was born on January 7.**

Samantha Phillips

Luther College
700 College Dr.
SP0 2384,
Decorah, IA 52101

Our College Kids!**Andrea Nelson**

2508 Delaware St SE
Apartment 162A
Minneapolis, MN 5414-3469

Ainsley Nelson

110 Gilman St., Apt. 4
Madison, WI 53703

Kyle Nelson

Student Suite #1504
St. Norbert College
100 Grant Street
DePere, WI 54115

Robert Volpe

Coe College GMU # 1278
1220 1st Ave NE
Cedar Rapids, IA 52402

TREA\$URER's REPORT

Member giving through January - \$5,101 (plus someone's yearly contrib. of \$7,800)
Visitor giving through January - \$1,786

Income through all of 2014: Budget of \$148,250, Actual \$191,872
Expenses through all of 2014: Budget of \$173,444, Actual \$191,645

NEW WAY of doing offering envelopes for 2015

For those who have been consistently giving each week, you can still take a box of envelopes (not numbered, however, so be sure - if you give cash - to write your name on the outside so you get credited for the offering)

For those who give bi-weekly, you can pick up a packet of 26, already sorted out

For those who give monthly, there are packets of 12

For those who give sporadically, you can take a bundle of what you feel you may use, or use the pew envelopes when you give.

They are on the pew outside of the sanctuary for you to pick up.

The envelopes used to cost us \$222
This year the bill was \$118



**Join us for Inspirational Lenten Services
With Sister Bay Moravian & Scandia Village
Beginning Ash Wednesday
February 18 at 6:30 p.m.
Meadows Gathering Room, Scandia Village**

February birthdays

Frances Burton...1
 Paul Wilson...2
 Dale Jacobson...3
 Betty Wolf...5
 Dick Bierman... 5
 Diane Jacobson...6
 Tim Christofferson... 10
 Betty Anderson...15
 Shelley Cox...18
 B. D. Thorp...18
 Pat Horvath...20
 Natalie Neddersen ...20
 Chris Farmer...21
 Lorraine Morton...21
 Theresa Weborg...26
 Marilyn Cushing - 26
 Karin Jacobson...28
 Niles Weborg...29

February anniversaries

Norma and Roger Larson – Feb 13, 1971

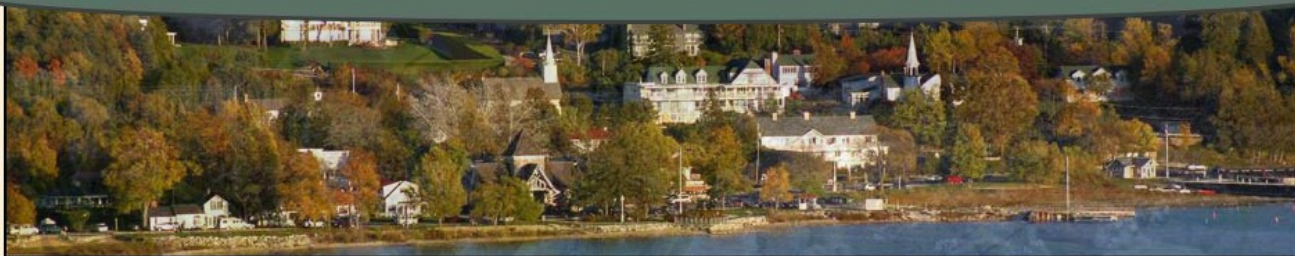


If your name, or the name of a loved one is not listed in our birthday and anniversary listings, please let us know by email or phone!

REALTORS

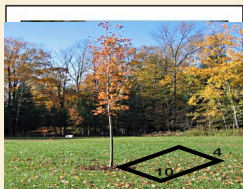


Residential | Condominiums | Waterfront | Land | Commercial | Foreclosures | Rentals | Showcase | Recently Sold



Vacant Land, Building Lots for Sale in Door County

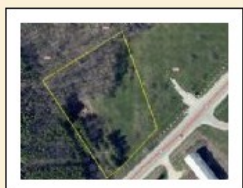
The Real Estate office of specializes in Door County Real Estate. Below is a list of building lots and vacant land currently for sale in Door County. Many of our Door County properties feature a virtual tour. Just click on the virtual tour icon to view. If you have any questions about these listings or have a land to sell in Door County, please contact us at



Ephraim, WI

Vacant plots, \$150 special—(For Church Members)

The Ephraim Moravian Cemetery offers many 4 x 10 lots for sale. Price rises to \$250 after 2015. Beautiful location, plenty of mature trees on the property. You will enjoy this location forever, surrounded by friends and family. Contact Kathy Kirkland, 854-6174 or at ephkathy@charter.net for more information.



Town of Egg Harbor, WI

Offered at \$69,900 per lot

A perfect location for your new business. Great commercial opportunity to be right across from one of the busiest farm markets in Door County. 2.03 acres also available for 69,900.

OPEN DOOR LUNCHEONS!!

Sign up in the Fellowship Hall if you can head up one month, help provide food for one month, or help with set-up and clean-up. We usually get about 40 people for each lunch, and it's a wonderful outreach ministry. Get involved!

February 18
March 18 April 15



FREE COMMUNITY LUNCH SISTER BAY MORAVIAN!

DATE: Wednesday, February 4

TIME: 12 Noon

EVENT: SOUPER BOWL Community Lunch

COST: FREE to the entire community! Great conversation, hearty food!

MENU: SIX crockpot soups – warm yourself up!

Our Dearly Departed

Over the holidays, it was wonderful to see green wreaths and sprays in the cemetery. We strive to keep the interior roads plowed so people can still visit and remember their loved ones. A reminder that artificial plants or flowers are not allowed. They look good at first, but after a couple of rains—well, *not* so good. Here are the cemetery rules:

Flowers, Shrubs, Trees

The cemetery will allow only the use of natural flowers or plants for the decoration of gravesites. All planted flowers will not extend more than eight inches from the headstone. From May 1 to November 1, only live plantings will be allowed; from November 2 to April 30 (during winter months), evergreen or natural material wreaths may be placed on gravesites.

Bushes, trees, shrubbery or creeping plants may not be planted at any gravesite, neither shall any flower boxes, potted plants jars, urns, or other receptacles or decorations be permitted. Metal spikes/crooks that hold potted plants above the ground are permissible within eight inches of the headstone; however, plantings will be removed and discarded if not cared for.

Commemorative markers or American flags shall be placed for only two weeks surrounding national holidays or they will be subsequently removed by the cemetery superintendent.

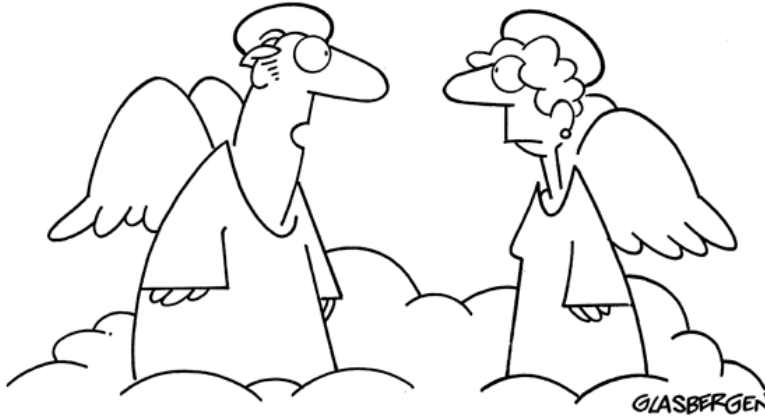
Here are summer and winter examples of cemetery plantings:



Adopt Someone!

The newer sections of our cemetery are bright with flowers much of the year, with greenery over winter. However, the older sections (nearest Willow) are bare. Next time you stroll through the cemetery, choose someone who doesn't have anyone to leave them flowers and do some spring planting: daffodils or other perennials. Adopt a departed church family member and pay tribute to their time here in Ephraim.

© Randy Glasbergen.
www.glasbergen.com



"In 1953 you were my math teacher. You promised that algebra would come in handy someday. How much longer do I have to wait?"

Bible Study continues!

Bible Study series
continue through
Friday, February 27

on **Fridays at 10:00 a.m.**

The subject is the
Afterlife.

Refreshments, too.

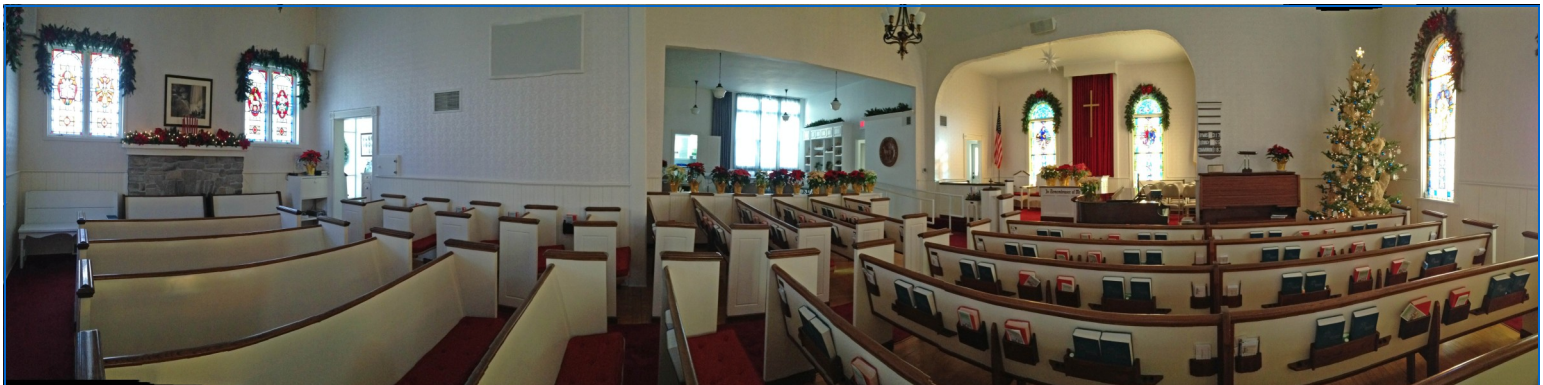
Valentine's Progressive Dinner Saturday, February 14



There will be four courses/locations for the
progressive dinner:

- *appetizers
- *soup/salad
- *main dish
- *desserts

Let us know if you are interested in attending the dinner or providing a location/food for one of the courses: 854-2804 or email us at worship@ephraimmoravian.org



Christmas panorama 2014

photo by Cici Mulliken

Ephraim Moravian Church
P.O. Box 73
Ephraim, Wisconsin 54211

POSTAL WORKER: Thank you for delivering this to:

February 2015 Newsletter

A place of rest

Photo by Tad Dukehart



Ephraim Moravian Church - PO Box 73, 9970 Moravia Street - Ephraim, WI 54211 - 920-854-2804
Website: www.ephraimmoravian.org

General Correspondence: worship@ephraimmoravian.org

Visit us on Facebook!



February 2015

Sun	Mon	Tues	Wed	Thu	Fri	Sat
1	2	3	4	5	6	7
9 am Sunday School 10 am Worship and Communion		Elders 5 p.m.		6 pm free-will Chili supper 7 pm Taizé service at Shepherd of the Bay Church		Spiritual Writing workshop at Sister Bay Moravian Church 10 a.m.
8	9	10	11	12	13	14
9 am Sunday School 10 am Worship - Joyful Noise			10 a.m. Trustees			8-10:30 a.m. Heart-y Breakfast at Sister Bay Moravian Church Progressive Dinner
15	16	17	18	19	20	21
9 am Sunday School 10 am Worship			12 noon Open Door Lunch Ash Wed. 6:30 p.m. Meadows			
22	23	24	25	26	27	28
9 am Sunday School 10 am Worship			Lenten Service 6:30 pm Meadows			
			9			

